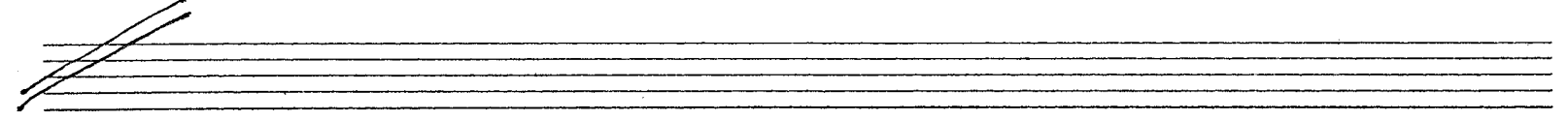


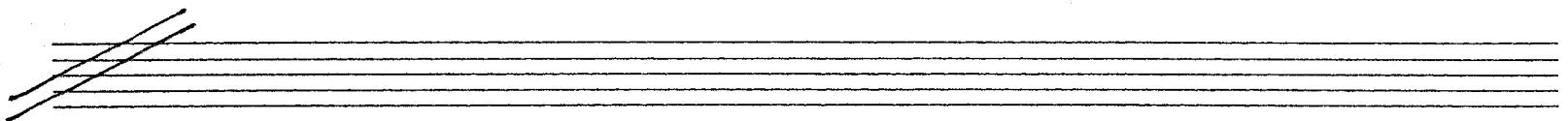
♩ = 60

D_b
E_b

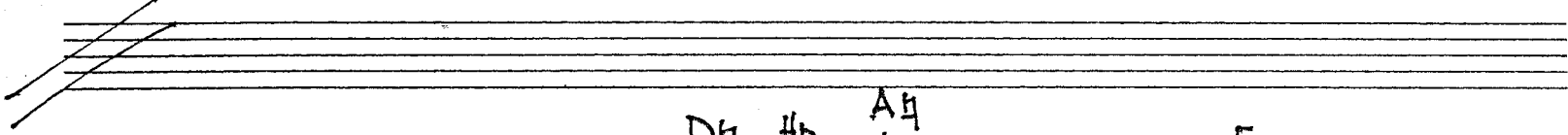
Handwritten musical notation for the first system. It consists of two staves. The upper staff is in treble clef and contains a few notes with accidentals (flats and naturals). The lower staff is in bass clef and contains a more complex melodic line with dynamic markings such as *sfz* and *l.v.* (ritardando). There are also some rests and slurs present.



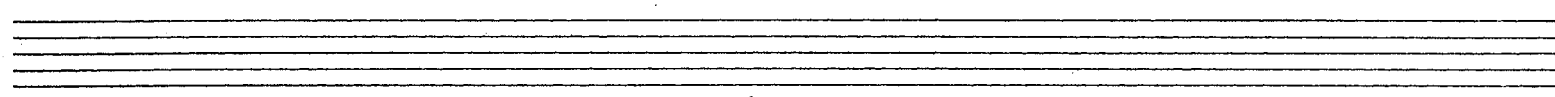
Handwritten musical notation for the second system. It consists of two staves. The upper staff is in treble clef and features several chords and notes with various accidentals (flats, naturals, and sharps). The lower staff is in bass clef and contains a melodic line with notes and accidentals. There are some dynamic markings and slurs.



Handwritten musical notation for the third system. It consists of two staves. The upper staff is in treble clef and contains notes with accidentals. The lower staff is in bass clef and contains a melodic line with notes and accidentals. There are some dynamic markings and slurs.



Handwritten musical notation for the fourth system. It consists of two staves. The upper staff is in treble clef and contains notes with accidentals. The lower staff is in bass clef and contains a melodic line with notes and accidentals. There are some dynamic markings like *subf* and various accidentals.



IMI 6820



Ab 6 Eb A7 Db F# 8

non decresc. sempre ff

Hb

l.v. l.v.

étouffez mon arp. sfz

A7 3

étouffé Ab A7

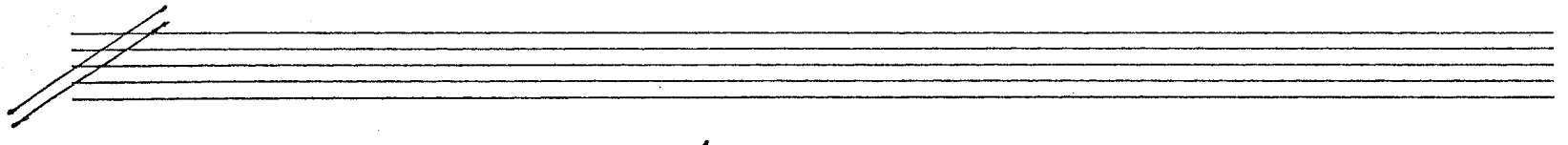
sub-p sfz sfz

cantab.

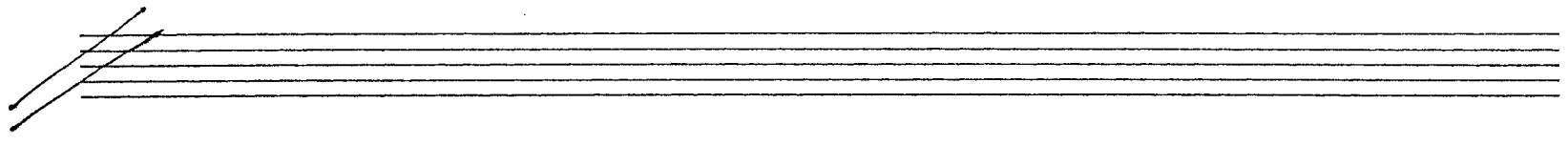
mf p



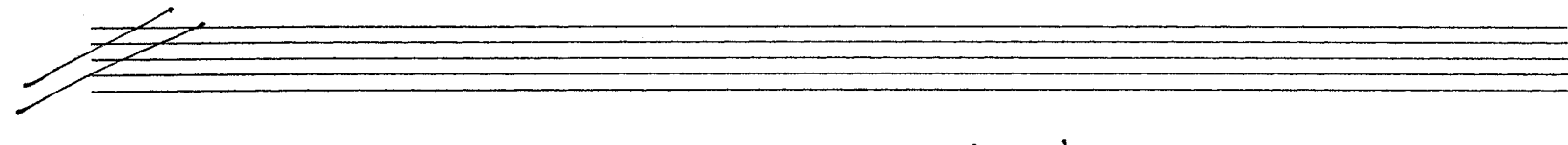
Handwritten musical notation for the first system. The treble clef staff begins with a key signature change to F# (F#) and contains notes with accidentals (sharps and flats) and plus signs (+). The bass clef staff contains notes with accidentals and a dynamic marking of *mf*. The instruction "près d.l. table" is written above the treble staff, and "mat." is written below the bass staff.



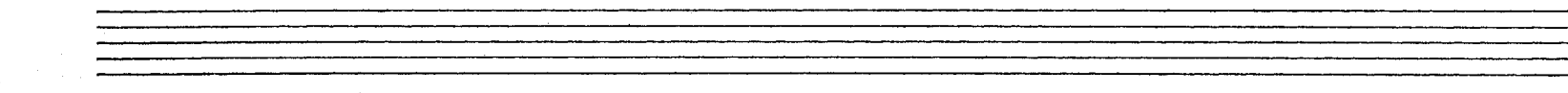
Handwritten musical notation for the second system. The treble clef staff features notes with accidentals and dynamic markings including *f* and *mf*. The bass clef staff contains notes with accidentals, dynamic markings, and triplet markings (3). The instruction "l.v." is written above the bass staff.



Handwritten musical notation for the third system. The treble clef staff contains notes with accidentals and dynamic markings including *f*. The bass clef staff contains notes with accidentals and triplet markings (3).



Handwritten musical notation for the fourth system. The treble clef staff contains notes with accidentals and dynamic markings including *f*. The bass clef staff contains notes with accidentals and dynamic markings.



Handwritten musical notation for the first system, featuring a treble and bass clef with various chords and melodic lines. Chords are labeled with 'Db' and '5'.

Handwritten musical notation for the second system, including a treble and bass clef with complex chordal textures. Chords are labeled 'Db' and 'Ab'. Dynamics include 'sfz' and 'sempre ff'.

Handwritten musical notation for the third system, starting with 'près d. la table' and 'sub. p' in the treble clef, and 'nat. mf' in the bass clef. Chords are labeled 'Ab' and 'Hq'.

Handwritten musical notation for the fourth system, featuring a treble and bass clef with intricate chordal patterns. Chords are labeled 'C#', 'G#', and 'G7'. Dynamics include 'sub. f', 'slim.', and 'nat.'.



Handwritten musical score for the first system. It consists of two staves. The top staff begins with a treble clef, a key signature of one sharp (F#), and a time signature of 4/4. The first measure contains a sixteenth note followed by a dotted quarter note, with a '6' written above. The second measure contains a dotted quarter note followed by an eighth note, with 'l.v.' written below. The third measure contains a dotted quarter note followed by an eighth note, with a '3' above. The fourth measure contains a dotted quarter note followed by an eighth note, with a '5+' above. The fifth measure contains a dotted quarter note followed by an eighth note, with a 'b+' above. The sixth measure contains a dotted quarter note followed by an eighth note, with a 'b+' above. The seventh measure contains a dotted quarter note followed by an eighth note, with a 'b+' above. The eighth measure contains a dotted quarter note followed by an eighth note, with a 'b+' above. The bottom staff begins with a bass clef and a dynamic marking of 'f'. It contains several measures of music, including a measure with a 'b+' above and a measure with a 'b+' above. The system ends with a dynamic marking of 'rampre f'.

Handwritten musical score for the second system. It consists of two staves. The top staff begins with a treble clef, a key signature of one sharp (F#), and a time signature of 4/4. The first measure contains a dotted quarter note followed by an eighth note, with a '3' above. The second measure contains a dotted quarter note followed by an eighth note, with a 'b+' above. The third measure contains a dotted quarter note followed by an eighth note, with a '3' above. The fourth measure contains a dotted quarter note followed by an eighth note, with a 'b+' above. The fifth measure contains a dotted quarter note followed by an eighth note, with a '3' above. The sixth measure contains a dotted quarter note followed by an eighth note, with a 'b+' above. The seventh measure contains a dotted quarter note followed by an eighth note, with a 'b+' above. The eighth measure contains a dotted quarter note followed by an eighth note, with a 'b+' above. The bottom staff begins with a bass clef and contains several measures of music, including a measure with a '3' above and a measure with a '3' above.

Handwritten musical score for the third system. It consists of two staves. The top staff begins with a treble clef, a key signature of one sharp (F#), and a time signature of 4/4. The first measure contains a dotted quarter note followed by an eighth note, with a 'b+' above and a '3' above. The second measure contains a dotted quarter note followed by an eighth note, with a '3' above. The third measure contains a dotted quarter note followed by an eighth note, with a '3' above. The fourth measure contains a dotted quarter note followed by an eighth note, with a '3' above. The fifth measure contains a dotted quarter note followed by an eighth note, with a '3' above. The sixth measure contains a dotted quarter note followed by an eighth note, with a '3' above. The seventh measure contains a dotted quarter note followed by an eighth note, with a '3' above. The eighth measure contains a dotted quarter note followed by an eighth note, with a '3' above. The bottom staff begins with a bass clef and contains several measures of music, including a measure with a '3' above and a measure with a '3' above.

Handwritten musical score for the fourth system. It consists of two staves. The top staff begins with a treble clef, a key signature of one sharp (F#), and a time signature of 4/4. The first measure contains a dotted quarter note followed by an eighth note, with a '3' above. The second measure contains a dotted quarter note followed by an eighth note, with a '3' above. The third measure contains a dotted quarter note followed by an eighth note, with a '3' above. The fourth measure contains a dotted quarter note followed by an eighth note, with a '3' above. The fifth measure contains a dotted quarter note followed by an eighth note, with a '3' above. The sixth measure contains a dotted quarter note followed by an eighth note, with a '3' above. The seventh measure contains a dotted quarter note followed by an eighth note, with a '3' above. The eighth measure contains a dotted quarter note followed by an eighth note, with a '3' above. The bottom staff begins with a bass clef and contains several measures of music, including a measure with a '3' above and a measure with a '3' above. The system ends with a dynamic marking of 'p'.



Handwritten musical notation for the first system, featuring a grand staff with treble and bass clefs. The key signature is F# (one sharp). The notation includes various rhythmic values, accidentals, and dynamic markings such as *f*. The system concludes with a trill-like figure in the right hand.

Handwritten musical notation for the second system, continuing the piece. It includes a key signature change to C# (two sharps) and features complex rhythmic patterns, including triplets and slurs. The notation is dense with accidentals and dynamic markings.

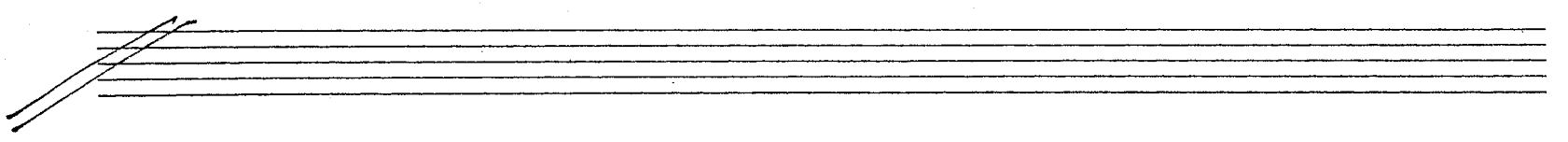
Handwritten musical notation for the third system, showing further development of the musical ideas. It contains several triplet markings and complex chordal structures in both hands, with various accidentals and dynamic markings.

Handwritten musical notation for the fourth system, which includes a key signature change to B (two sharps). The notation features intricate rhythmic patterns and complex chordal textures, ending with a *l.v.* (left hand) marking.

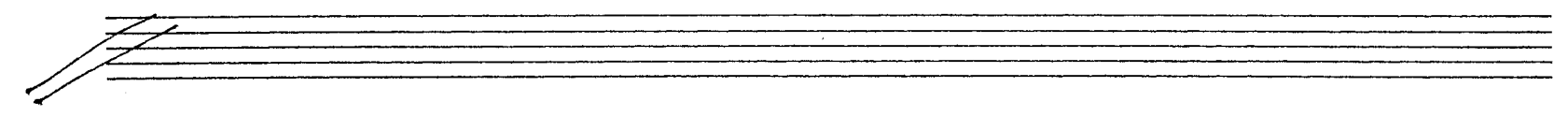
Two sets of empty musical staves at the bottom of the page, intended for further notation or practice.



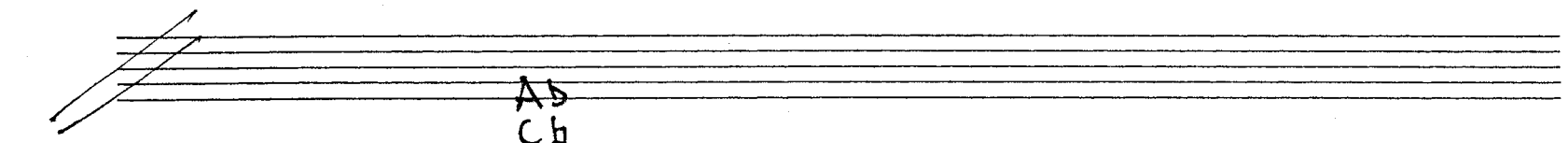
Handwritten musical notation for the first system, featuring a grand staff with treble and bass clefs. The notation includes various notes, rests, and chord symbols such as $b7$ and $+ b7$.



Handwritten musical notation for the second system, including a grand staff with treble and bass clefs. The notation includes notes, rests, and chord symbols such as $b7$, $+$, and p .



Handwritten musical notation for the third system, featuring a grand staff with treble and bass clefs. The notation includes notes, rests, and chord symbols such as $H4$, $A4$, 3 , and $C\#$.

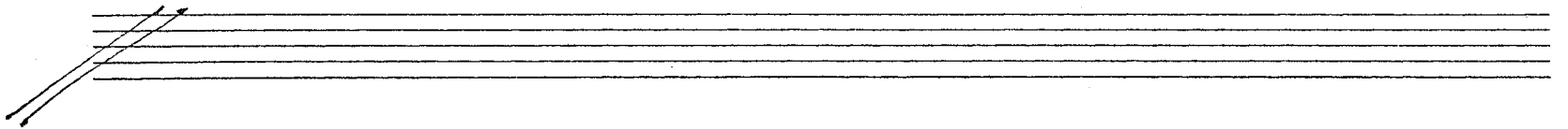


Handwritten musical notation for the fourth system, including a grand staff with treble and bass clefs. The notation includes notes, rests, and chord symbols such as $A5$, $C\#$, and $b7$.



A4

Handwritten musical notation for the first system, featuring a treble and bass clef with various notes and accidentals.

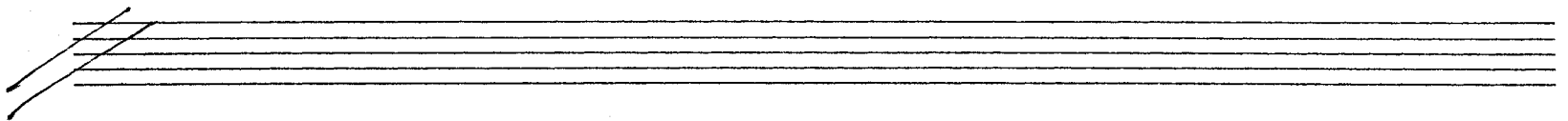


A^b

3

C[#]

Handwritten musical notation for the second system, including triplets and a mezzo-forte (mf) dynamic marking.



F⁴

E⁴

G^b

A⁴

Handwritten musical notation for the third system, showing a sequence of chords and notes.

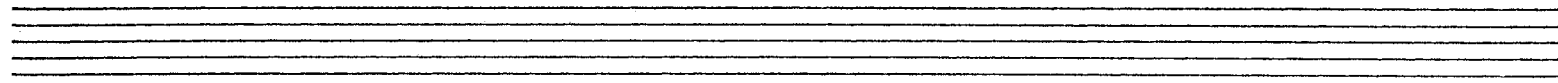


G⁴

F[#]

H^b

Handwritten musical notation for the fourth system, including various chordal textures and melodic lines.



Db H4 C4 F4

Ab F#

F4



Handwritten musical notation for the first system, featuring a grand staff with treble and bass clefs. The notation includes various notes, rests, and accidentals. Above the staff, several chords are labeled: F#, Fb, D7, A4, and E4. The bass line shows a sequence of notes with accidentals, including a double flat (bb) and a double sharp (##).

Handwritten musical notation for the second system, continuing the piece. It features a grand staff with treble and bass clefs. Above the staff, chords are labeled: Ab, 6, 6, A4, Db, F4, and Fb. The notation includes various notes, rests, and accidentals, with some notes marked with a 'y' or a '>' symbol.

Handwritten musical notation for the third system, featuring a grand staff with treble and bass clefs. Above the staff, chords are labeled: Ab and F#. The notation includes various notes, rests, and accidentals, with some notes marked with a 'y' or 'l.v.' symbol.

Handwritten musical notation for the fourth system, featuring a grand staff with treble and bass clefs. Above the staff, chords are labeled: A4 and Ab. The notation includes various notes, rests, and accidentals, with some notes marked with a 'y' or a '>' symbol.



Handwritten musical notation for the first system. It consists of two staves (treble and bass clefs). The notation includes various notes, accidentals (sharps, flats, naturals), and dynamic markings. Key markings include 'A4' and 'F4'. There are also some handwritten annotations like 'mom' and 'arp.' near the 'F4' marking.

Handwritten musical notation for the second system. It consists of two staves. The notation includes notes, accidentals, and dynamic markings. Key markings include 'étouf. Ab et.', 'l.v.', and 'fine'. There are also some handwritten annotations like 'sfz' and 'f'.

A blank system of musical notation with treble and bass staves.

A blank system of musical notation with treble and bass staves.

A blank system of musical notation with treble and bass staves.

A blank system of musical notation with treble and bass staves.