

ESSAY (MASSA) III

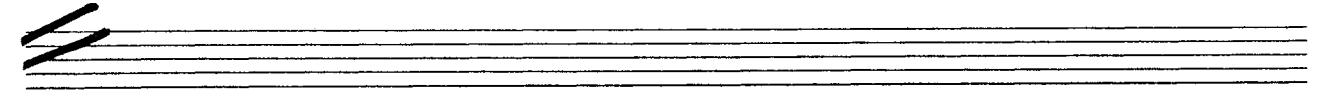
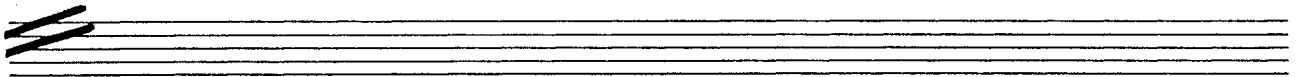
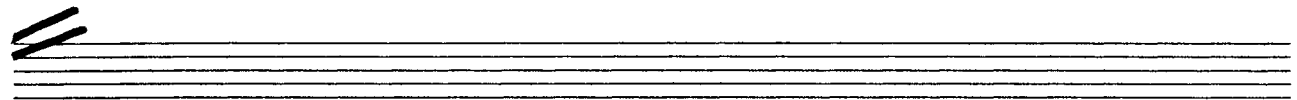
FOR PIANO (1989)

מסה ווו

לפסנתר (1989)

יוסף טל
JOSEF TAL

$\text{♩} = 105$

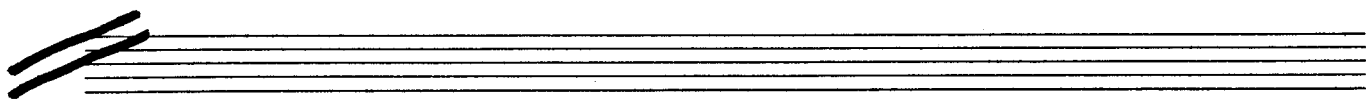
Handwritten musical notation for the first system. It consists of two staves: a treble staff and a bass staff. The treble staff begins with a treble clef and a key signature of two sharps (F# and C#). The bass staff begins with a bass clef and a key signature of two sharps. The notation includes various chord structures, some with accidentals, and melodic lines. A 'gtr' marking is present above the first few notes of the treble staff. The system ends with a double bar line.

Handwritten musical notation for the second system. It consists of two staves: a treble staff and a bass staff. The treble staff begins with a treble clef and a key signature of two sharps. The bass staff begins with a bass clef and a key signature of two sharps. The notation includes various chord structures, some with accidentals, and melodic lines. The system ends with a double bar line.

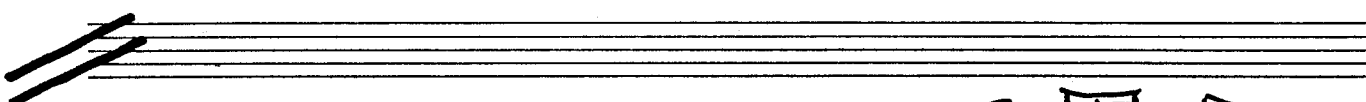
Handwritten musical notation for the third system. It consists of two staves: a treble staff and a bass staff. The treble staff begins with a treble clef and a key signature of two sharps. The bass staff begins with a bass clef and a key signature of two sharps. The notation includes various chord structures, some with accidentals, and melodic lines. The system ends with a double bar line.

Handwritten musical notation for the fourth system. It consists of two staves: a treble staff and a bass staff. The treble staff begins with a treble clef and a key signature of two sharps. The bass staff begins with a bass clef and a key signature of two sharps. The notation includes various chord structures, some with accidentals, and melodic lines. The system ends with a double bar line.

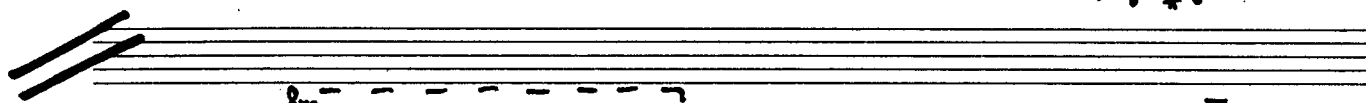
Handwritten musical notation for the first system, consisting of two staves with bass clefs. The notation includes various notes, rests, and chords, with some notes marked with plus signs.



Handwritten musical notation for the second system, consisting of two staves with bass clefs. The notation includes various notes, rests, and chords, with some notes marked with plus signs.



Handwritten musical notation for the third system, consisting of two staves with bass clefs. The notation includes various notes, rests, and chords, with some notes marked with plus signs.



Handwritten musical notation for the fourth system, consisting of two staves with treble and bass clefs. The notation includes various notes, rests, and chords, with some notes marked with plus signs.

Handwritten musical score for the first system, featuring two staves with complex chordal textures and melodic lines. The notation includes various accidentals and dynamic markings.

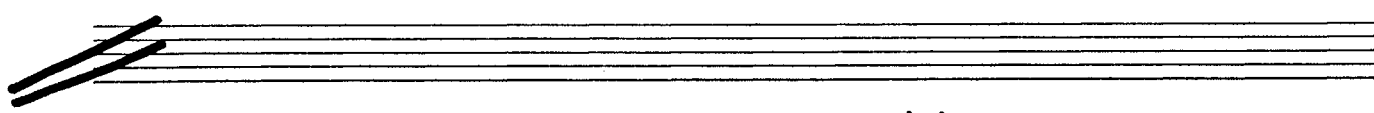
$\text{♩} = 70$

l. b.

Handwritten musical score for the second system, including piano and pedal parts. The piano part features triplets and dynamic markings such as *ppp espr.* and *sub. pp*. The pedal part is indicated by 'Ped.' and includes chordal structures.

Handwritten musical score for the third system, continuing the piano and pedal parts. The piano part includes triplets and dynamic markings such as *sempre pp*. The pedal part continues with chordal textures.

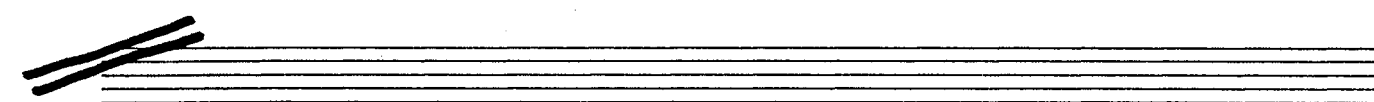
Handwritten musical score for the first system, featuring bass clefs. The notation includes triplets, trills, and dynamic markings such as *tr*, *3*, and *ten.* The piece is written in a key with one sharp (F#).



Handwritten musical score for the second system. It includes dynamic markings *p*, *pp*, and *F*. The notation features a section marked *agitato* and contains several quintuplets (marked with '5'). The piece is written in a key with one sharp (F#).



Handwritten musical score for the third system, characterized by complex chordal textures. It includes dynamic markings such as *sfz*. The notation is dense with many notes and accidentals. The piece is written in a key with one sharp (F#).



Handwritten musical score for the fourth system. It includes dynamic markings *ppp* and *pp*, and the instruction *Ped.* (pedal). The notation features complex chordal textures and is written in a key with one sharp (F#).

Handwritten musical score for the first system. It consists of two staves: a treble clef staff on top and a bass clef staff on the bottom. The treble staff begins with a triplet of eighth notes, followed by a series of notes with accidentals (sharps and flats) and slurs. The bass staff contains a long, low note with a slur, followed by a half note with a sharp sign and a slur. There are dynamic markings such as *tr* (trill) and *p* (piano) scattered throughout the system. The system ends with a double bar line and the letters "Rd" written below the staff.



Handwritten musical score for the second system. The treble clef staff starts with a triplet of eighth notes, followed by several notes with accidentals and slurs. The bass clef staff contains a series of notes with accidentals and slurs. Dynamic markings include *mf* (mezzo-forte), *p* (piano), and *subff* (sub-fortissimo). The system concludes with a double bar line and the letters "Rd" written below the staff.



Handwritten musical score for the third system. The treble clef staff begins with a trill marked *tr*, followed by notes with accidentals and slurs. The bass clef staff contains notes with accidentals and slurs. Dynamic markings include *p* (piano). The system ends with a double bar line and the letters "Rd" written below the staff.



Handwritten musical score for the fourth system. The treble clef staff starts with a triplet of eighth notes, followed by notes with accidentals and slurs. The bass clef staff contains notes with accidentals and slurs. Dynamic markings include *mf* (mezzo-forte). The system concludes with a double bar line and the letters "Rd" written below the staff.

Handwritten musical score for the first system. The top staff is in treble clef and the bottom staff is in bass clef. The music includes a five-measure rest in the treble staff, followed by a series of notes. A box above the treble staff contains the text "ff = 105". The word "Sve" is written above the treble staff. Dynamic markings include "f" and "ff". A measure number "9" is written at the end of the system.



Handwritten musical score for the second system. The top staff is in treble clef and the bottom staff is in bass clef. The music continues with complex rhythmic patterns and various accidentals.

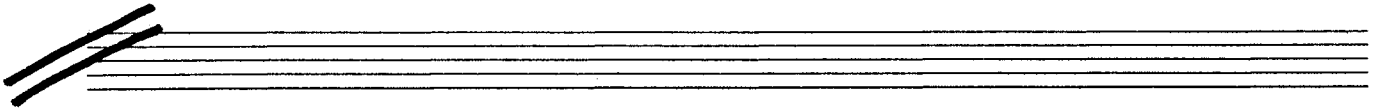


Handwritten musical score for the third system. The top staff is in treble clef and the bottom staff is in bass clef. The music continues with complex rhythmic patterns and various accidentals.

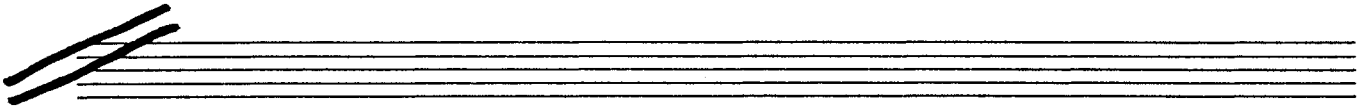


Handwritten musical score for the fourth system. The top staff is in treble clef and the bottom staff is in bass clef. The music concludes with a final cadence.

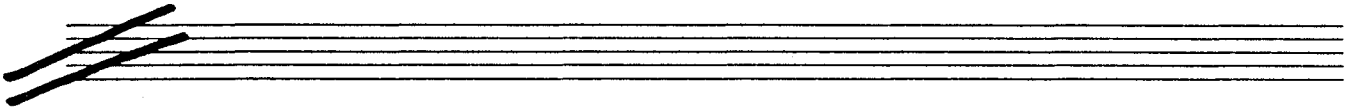
Handwritten musical notation for the first system, featuring a grand staff with treble and bass clefs, various notes, and accidentals.



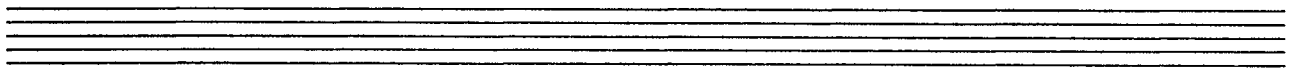
Handwritten musical notation for the second system, featuring a grand staff with treble and bass clefs, various notes, and accidentals.



Handwritten musical notation for the third system, featuring a grand staff with treble and bass clefs, various notes, and accidentals.



Handwritten musical notation for the fourth system, featuring a grand staff with treble and bass clefs, various notes, and accidentals.



Handwritten musical notation for the first system, consisting of two staves with treble clefs. The notation includes various notes, rests, and chords, with some notes marked with accidentals (sharps and flats). The first staff has a treble clef and a key signature of one sharp (F#). The second staff has a treble clef and a key signature of one flat (Bb). The notation is dense and includes many accidentals.

Handwritten musical notation for the second system, consisting of two staves with treble clefs. The notation includes various notes, rests, and chords, with some notes marked with accidentals (sharps and flats). The first staff has a treble clef and a key signature of one sharp (F#). The second staff has a treble clef and a key signature of one flat (Bb). The notation is dense and includes many accidentals.

Handwritten musical notation for the third system, consisting of two staves with treble clefs. The notation includes various notes, rests, and chords, with some notes marked with accidentals (sharps and flats). The first staff has a treble clef and a key signature of one sharp (F#). The second staff has a treble clef and a key signature of one flat (Bb). The notation is dense and includes many accidentals.

Handwritten musical notation for the fourth system, consisting of two staves with bass clefs. The notation includes various notes, rests, and chords, with some notes marked with accidentals (sharps and flats). The first staff has a bass clef and a key signature of one sharp (F#). The second staff has a bass clef and a key signature of one flat (Bb). The notation is dense and includes many accidentals.

Dur.: ca. 5'00"

Fine

Printed Nov. 1989

June 1989